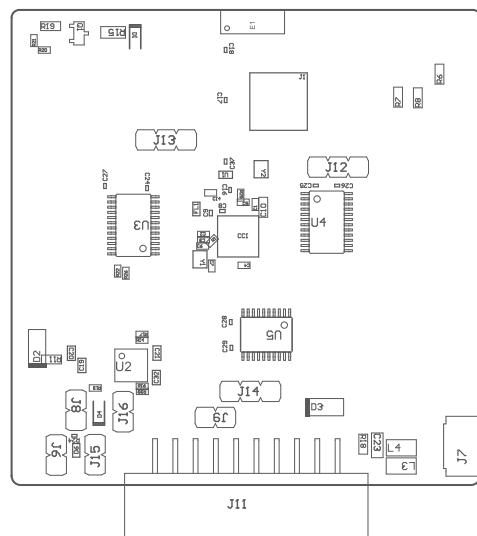
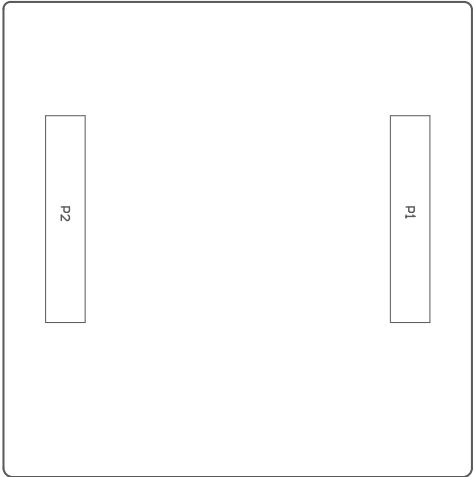


221 ■ These assemblies are ESD sensitive, ESD precautions shall be observed.  
222 ■ These assemblies must be clean and free from flux and all contaminants. Use of no clean flux is not acceptable.  
223 ■ These assemblies must comply with workmanship standards IPC-A-610 Class 2, unless otherwise specified.



COMPONENTS MARKED 'DNP' SHOULD NOT BE POPULATED.  
ASSEMBLY VARIANT: Dual-band

PCB VIEWED FROM TOP SIDE	BOARD #: MCU121	REV: A	SUN REV: Unknown revision
	TID #: N/A		
PLOT NAME = Top Assembly Drawing	GENERATED : 6/12/2024 3:28:18 PM		TEXAS INSTRUMENTS



COMPONENTS MARKED 'DNP' SHOULD NOT BE POPULATED.  
ASSEMBLY VARIANT: Dual-band

PCB VIEWED FROM BOTTOM SIDE	BOARD #: MCU121	REV: A	SUN REV: Unknown revision
	TID #: N/A		
PLOT NAME = Bottom Assembly Drawing	GENERATED : 6/12/2024 3:28:18 PM		TEXAS INSTRUMENTS